

SikaColor®-100 P

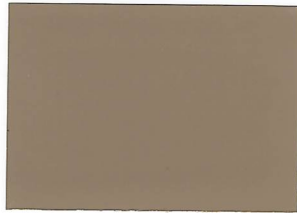
POWDER INTEGRAL COLORS

FOR COLOR-CONDITIONED® CONCRETE

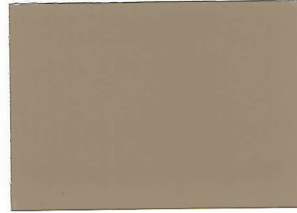
BUILDING TRUST



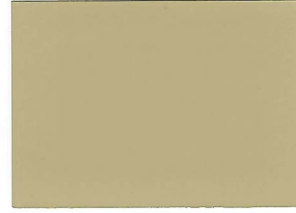
Colors shown on this chart approximate the color of broom finished concrete flatwork made with a medium gray cement and cured with SikaColor®-500 Colorwax™ in the matching color or sealed with SikaCem®-100 Clear Guard®. If SikaColor®-500 Colorwax™ or SikaCem®-100 Clear Guard® are not used, the concrete color will not be as vibrant as shown. Concrete should be batched and placed in accordance with Product Data Sheets. Concrete color is altered by many factors, including cement and aggregate color, slump, finishing practices, and curing method. Using the contemplated materials and construction techniques, representative samples should be cast for approval, especially when exact color matching is important.



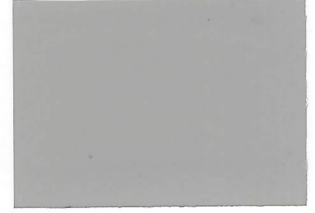
U10 Sonoran Tan



U11 Autumn Oak



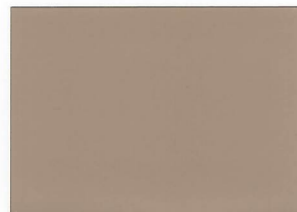
U26 Lanon Stone



U20 Smoke



U21 Sandstone



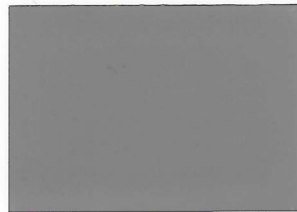
U12 Sunset Beige



U13 Millstone



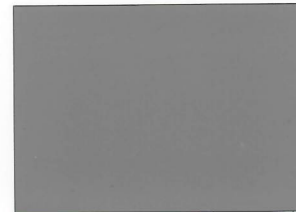
U31 Weathered Terra Cotta



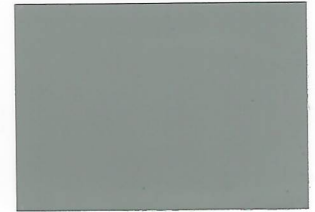
U18 Gull Gray



U22 Salt Marsh Gray



U35 Shadow Slate



U51 Clary Sage



U24 Georgia Clay



U15 Coral Buff



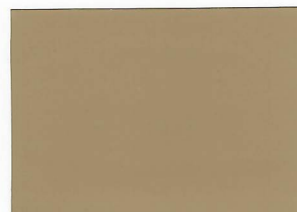
U16 Harvest Wheat



U37 Sienna



U27 Mocha Brown



U25 Santa Fe Buff



U33 Hampshire Red



U34 Brick Red



U14 Pewter



U29 Soapstone



U28 Charcoal



U49 Deep Charcoal