

SikaColor[®]-300 ANTIQUING RELEASE

SikaColor[®]-340 SG ANTIQUING RELEASE

SikaColor[®]-350 ANTIQUING AGENT

Colors shown on this chart approximate the color of the release powder. When the release powder is applied to colored concrete and stamped, the two colors will combine and create variations of color. The amount of release color retained after washing will also vary depending on the condition of the concrete when it was stamped.

Concrete color is altered by many factors, including cement and aggregate color, slump, finishing practices, and curing method. Using the contemplated materials and construction techniques, representative samples should be cast for approval, especially when exact color matching is important.

Please indicate when ordering:

- SikaColor[®]-300 Antiquing Release: R#
- SikaColor[®]-340 SG Antiquing Release: SGR#
- SikaColor[®]-350 Antiquing Agent: PT#



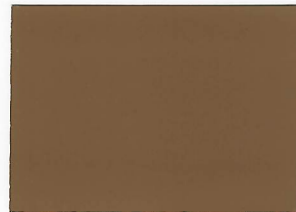
R12/SGR12/PT12 Storm Gray



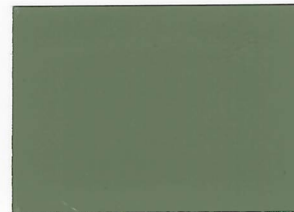
R13/SGR13/PT13 Deep Charcoal



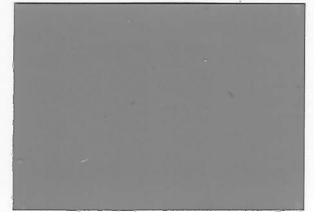
R23/SGR23/PT23 Smoke



R18/SGR18/PT18 Chestnut



R28/SGR28/PT28 Slate Gray



R26/SGR26/PT26 Cape Cod Gray



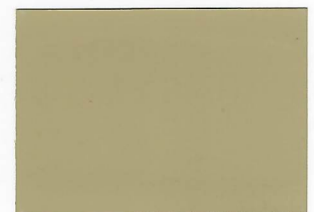
R33/PT33 Black



R27/PT27 Westwood Brown



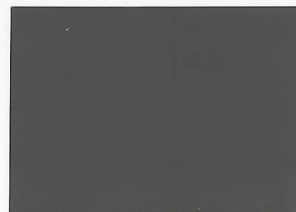
R29/SGR29/PT29 Wheat



R22/SGR22/PT22 Arena Buff



R25/SGR25/PT25 Colina Tan



R14/SGR14/PT14 Walnut



R19/SGR19/PT19 Russet



R15/SGR15/PT15 Brick Red